

## 1500SJ TELESCOPIC BOOM LIFTS

### Platform

- 0.91 m x 2.44 m low mount platform
- Side entry with drop bar mid rail
- Multiple function operation
- Full proportional drive joystick control with integral thumb steer switch
- Full proportional main boom and swing joystick control
- Variable speed dial control for telescope and platform rotate
- 2.44 m articulating jib
- 4.6 m to 7.6 m Telescoping jib
- Powered side stow on jib
- 180 degree powered platform rotator
- Platform console machine status light panel <sup>1</sup>
- Load sensing system
- AC cable to platform

### Power & Transmission

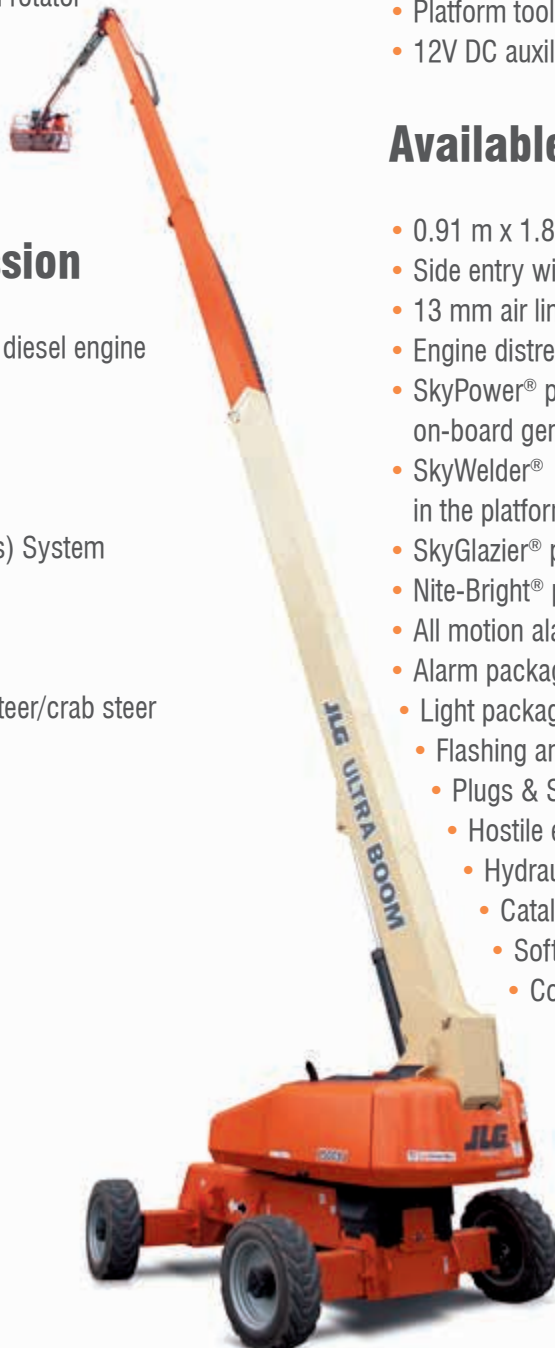
- Deutz TD2011L04 (55.9 kW) diesel engine
- Gull-wing hoods
- Swing-out engine tray
- Spark arresting type muffler
- Control ADE<sup>®</sup> (Advanced Design Electronics) System
- Adjustable swing drive
- Hydrostatic transmission
- Four wheel drive
- Four wheel steer/two wheel steer/crab steer
- Horn

### Functional Equipment & Accessories

- Selectable dual platform capacity system (230kg/450kg)
- Drive-out extending axles
- 4 degree tilt alarm and indicator light
- 445/50D710 foam filled lug tread tyres
- Oscillating front axle
- Lifting/tie down lugs
- Hour meter
- Ground control selector switch with key lock
- Load sensing hydraulics
- Platform tool tray
- 12V DC auxiliary power

### Available Options

- 0.91 m x 1.83 m low mount platform
- Side entry with inward swing gate
- 13 mm air line to platform
- Engine distress warning/shut down system <sup>2</sup>
- SkyPower<sup>®</sup> package 7,500 watt on-board generator
- SkyWelder<sup>®</sup> package 250 amp welder in the platform <sup>3</sup>
- SkyGlazier<sup>®</sup> package glass and panel tray
- Nite-Bright<sup>®</sup> package <sup>4</sup>
- All motion alarm
- Alarm package <sup>5</sup>
- Light package <sup>6</sup>
  - Flashing amber beacon
  - Plugs & Sockets
- Hostile environment package <sup>7</sup>
  - Hydraulic oil cooler
  - Catalytic purifier muffler
  - Soft Touch proximity system
  - Corner storage tray



<sup>1</sup> Provides indicator lights at platform control console for system distress, low fuel, 5 degree tilt light, and foot switch status.

<sup>2</sup> Low oil pressure and high coolant temperature alarms with shut-down enabled/disabled by analyser.

<sup>3</sup> Available when integrated with the SkyPower<sup>®</sup> package.

<sup>4</sup> Consists of six 40-watt lights, four turntable mounted lights and two platform mounted lights.

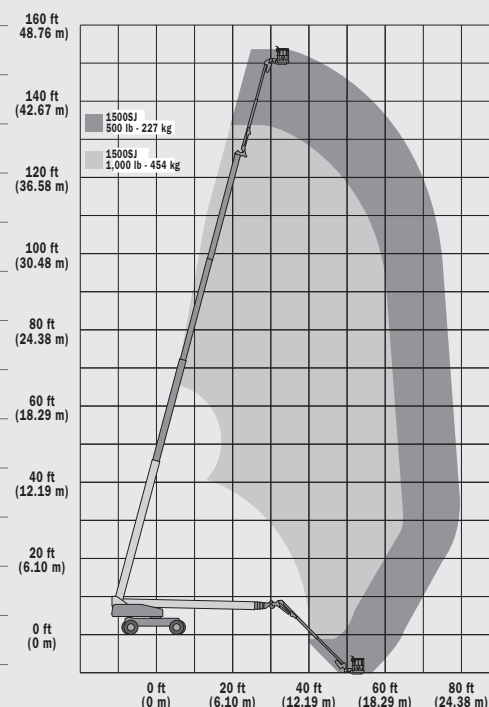
<sup>5</sup> Includes all-motion alarm and flashing amber beacon.

<sup>6</sup> Includes platform mounted work lights and head & tail lights.

<sup>7</sup> Includes console cover, boom wipers and cylinder bellows.

# 1500SJ TELESCOPIC BOOM LIFTS

Platform Height	45.72 m
Horizontal Outreach	24.38 m
Swing (Continuous)	360°
Platform Capacity – Restricted	450 kg
Platform Capacity – Unrestricted	230 kg
Platform Rotator (Hydraulic)	180°
Jib – Telescope : retracted	4.62 m
Jib – Telescope : extended	7.62 m
Jib - Range of articulation	120° Vertical (+75°/-45°)
A. Platform Size	0.91 m x 2.44 m
B. Overall Width (Axles Retracted)	2.49 m
Overall Width (Axles Extended)	3.81 m
C. Tailswing (working condition)	1.68 m
D. Stowed Height	3.05 m
E. Stowed Length	18.82 m
Transport length	13.11 m
F. Wheelbase	3.81 m
Ground Clearance	0.30 m
Machine weight <sup>1</sup>	22,000 kg
Maximum Ground Bearing Pressure	7.95 kg/cm <sup>2</sup>
Drive Speed	4.8 km/h
Gradeability	40%
Tyres	445/50D710 Foam Filled
Axle Oscillation	0.30 m
Turning Radius – Inside (Axles Retracted)	4.39 m
Turning Radius – Inside (Axles Extended)	2.44 m
Turning Radius – Outside (Axles Retracted)	6.86 m
Turning Radius – Outside (Axles Extended)	5.89 m
Diesel Engine - Deutz TD2011L04	55,9 kW
Fuel Tank Capacity	117 L
Hydraulic System	250 L
Auxiliary Power	12V DC



**JLG Industries, Inc. is a leading designer and manufacturer of access equipment and complementary services and attachments.**

JLG has manufacturing facilities in the United States, France, Romania, China and Belgium. Customers throughout Europe, Scandinavia, Africa and the Middle East benefit from a network of dedicated sales and service operations designed to deliver the highest levels of support.

**JLG is an Oshkosh Corporation company.**

**[www.jlgeurope.com](http://www.jlgeurope.com)**

<sup>1</sup> Certain options or country standards may increase weight and/or dimensions.